



Highcliffe School Student Bulletin

Monday 23rd – 27th March 2015: Week A

General Notices

Highcliffe/Ballard Lecture Series (VDN)

The lecture series this term has been extremely well supported by Highcliffe families, which is lovely to see. The next lecture will take place on **Thursday 26th March 2015 @ 7pm** at Ballard School. On this occasion there will be 3 speakers! There will be a Marketing Director, a local journalist and a children's author and illustrator. This will be a wonderful opportunity for students to come along and ask their questions to the expert's first-hand. Light refreshments will be served. No need to book – just turn up. We look forward to seeing you there.

An Audience with Harry Redknapp. (VDN)

Tickets are selling fast. Don't forget to buy your tickets from Mrs Dedman, priced £10 each. All proceeds go to Julia's House. **Thursday 28th May 2015.**

Year 10 PWL Mock Interviews (VDN)

Huge congratulations to all students in Year 10 who approached their recent interviews in a mature manner. The interviewers have been very complimentary about how everyone presented themselves. They were impressed how so many students do so much in and out of school and manage to balance their time so well.

Thank you to all staff for supporting this valuable programme. It was a real team effort.

Red Nose Mufti Day Wednesday 25th March (NCL)

There will be a whole school 'Red Nose mufti day' on Wednesday 25th March. This will be to raise money for charities chosen by year groups and for year group funds. Students are asked to contribute £1 either via WisePay before the day or in cash to their form tutor on the actual day. The normal constraints regarding 'mufti' will apply: students are expected to dress in a suitable way for the school day, for example, they should not wear clothing which displays offensive or inappropriate motifs or logos. Similarly hats and hoods should not be worn inside the school building and the normal health and safety rules will apply to the wearing of jewellery and footwear. No changes to hair colour or style should be made. There should be no face paint worn or similar. Students should also ensure that they attend school properly equipped for their lessons. Normal standards regarding behaviour and conduct will be expected in lessons and around the school.

Lost and Found (KTN)

A memory card for a camera, photos of someone dressed up as a ghost! Please collect from Student support. Mrs Thompson

Johoku (DBN)

Thank you for all your friendly and welcoming faces so far. You will probably see a lot more of them around school from now on, so get ready to say "Hello!" or "Konnichi-wa!" when you do see them. They will be giving a dance performance on Tuesday lunchtime in the gym. Why don't you come along and see them in action? Mr Bryden.

Arrangements for Friday 27th March (NCL)

The final day of term will be a shortened school day.

9am – 11am	Period 1 and 2 as normal
11am – 11.45am	Extended Break for 'Brunch'
11.45am – 12.45pm	Period 3
12.45pm – 1.45pm	Period 4
1.45pm – 2pm	Tutor time in tutor rooms
2pm	End of School day

Trips

Imperial War Museum trip Tuesday 24th March (HFH)

Please can all students who are on the trip ensure they have returned their medical forms and bring packed lunch, and that Year 10 students are in school uniform. Please can you meet outside the dining hall at 8.35am when the bell goes for registration so we can leave school by 8.50am. Make sure you catch up any work missed and complete any home study that is set.

Year 11 Humanities Trip to Italy (LDE)

Message for year 9 students going on the Humanities trip to Italy:

- Please make sure your up to date medical form is handed in
- Please bring in any additional letters regarding the carrying of epipens etc
- Remember to add the school mobile number to your phone
- We will be leaving school at 4.30 am on the Thursday 26th March.

Music Notices

	LUNCHTIME	AFTER SCHOOL
Tuesday	Woodwind Ensemble Miss Lockyer in Ex3 KS4 & KS5 support session Mr. Bannister In Ex5	KS4 & KS5 support session Mr. Bannister In Ex5
Wednesday		Choir - all new members welcome Miss Riley in Ex3
Thursday		G&T Session in Ex2
Friday	Guitar and Ukulele Club Mr. Bannister in Ex2	

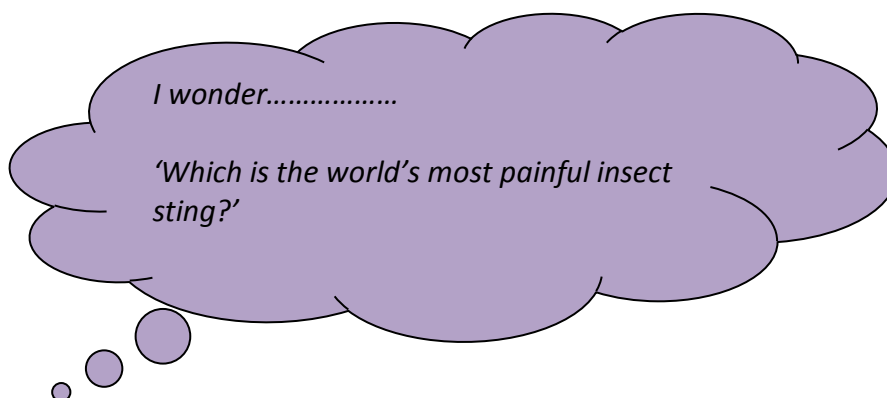
KS3 – If you would like to rehearse at lunchtimes you need to book the band room through MyHighcliffe (one booking per group per week) and if you would like to rehearse after school there is a booking sheet inside the front door of Ex3.

INTER-TUTOR ACTIVITIES SPRING 2015

MONDAY 23RD MARCH – FRIDAY 27TH MARCH

	MON	TUES	WEDS	THUR	FRI
1	8X Girls – Benchball Boys – Benchball		8Y Girls – Hockey Boys - Football	7Y <u>No inter-tutor comps</u>	7Y Girls – Netball Boys – Football
2	9X Girls – Hockey Boys - Football		7X Girls – Netball Boys – Football	7X <u>No inter-tutor comps</u>	8X Girls – Hockey Boys – Football
3				9Y <u>No inter-tutor comps</u>	8Y End of term games <u>Boys outdoor kit</u> <u>Girls trainers</u>
4		9Y Girls – Hockey Boys – Football		9X <u>No inter-tutor comps</u>	

IMPORTANT NOTE WEEK 2 IS DIFFERENT TO WEEK 1 WITH ACTIVITIES TAKING PLACE ON DIFFERENT DAYS. PLEASE MAKE SURE YOU HAVE THE CORRECT KIT FOR THE CORRECT DAYS/ACTIVITIES



Bookmark Competition (ENH)

Well done to all who took part, the standard of entries was very high! Winners were chosen by our book club panel of experts and should collect their Amazon voucher from the Library:

Leia Montague, Abigail Rice, Daniel Allsop-Phillips, Connie Murdoch

The following runners-up can also collect some Easter goodies:

Annabel Garner, Alice Webb and Jane Mitchell

Shaun's Cracking Ideas Design Challenge (KBD)

Shaun's Cracking Design Challenge gives schools and young people a chance to join the flock and engage with one of the world's most-loved animated characters. It's a baa-rilient way of inspiring your pupils' creativity, to encourage creative learning and promote good citizenship through fundraising. This year Shaun the Sheep takes over Cracking Ideas, and wants you all to help him get back to the farm! Shaun, Bitzer and their farmyard friends have found themselves in the big city and they need you to use your shear determination to help them get back to Mossybottom Farm. Your challenge is to invent a Cracking contraption to transport them baa-ck home!

How to enter

To enter Shaun's Cracking Ideas Design Challenge, download the competition entry form detailing your Cracking Contraption making sure you consider how it looks (design), what makes it unique (patent) and what you would name it (trade mark). Alternatively you can use your own materials to make models, take photographs, draw plans or record your Cracking Contraption in just about any way you feel!

Enter online www.crackingideas.com.



IMPROVE YOUR PERFORMANCE IN *YOUR* MFL EXAMS!



Have *you* joined up?

Visit www.quizlet.com, and develop your vocabulary today!

Sets are available to study in French, German, Spanish and Italian – with content from years 7 to 13!

1. Visit the Website at www.quizlet.com
2. Click 'Sign Up'.
3. Enter your details, giving your school username in the box.
4. Choose a password and WRITE IT DOWN.
5. Click 'Sign Up'.
6. Join a class or group set up by your languages teacher, or simply search for the topic you wish to study.

If you need more information, please ask Mr Barnes.

P.E. Notices

FIXTURES/ PRACTICES 23 rd – 27 th March		
	LUNCHTIME	AFTER SCHOOL
Monday	Year 9 Boys Indoor Football (JDN) Year 11 GCSE Fitness Club (Fitness Suite) (NJS)	
Tuesday	6 th form indoor football club (CFM)	Year 10/11 Girls Football Club (CFM) Year 8 Dorset School Games Football final squad training (CFM)
Wednesday	Year 7/8/9 Girls indoor Cricket Club (CFM)	Year 10 GCSE Table Tennis Club 3:05 – 4:30pm (External Coach) Year 9/10 Girls Rugby Club (CFM)
Thursday	Year 7 indoor football Club	Year 7/8/9/10 Girls cricket club (All welcome) 3:05- 4:15pm in the school gym (CFM) (New Milton Cricket captain to lead) Year 7/8 Girls Football Dorset School Games Finals @ David English (CFM) Leave 8.30am/Return approximately 3pm Year 8 Basketball Dorset School Games Final @ David English (NJS) Leave 8.30am/ Return 3pm approximately Year 10 Netball vs Arnewood (H) (LSN) Finish 5pm
Friday		

Year 11 Science Support Wednesday in SC8 3.05pm (RCN)

This week is for the Y half of the year group. We will be reviewing B4 sections A to D. The topics will cover ecology and sampling techniques, photosynthesis, plant structure, plant transport mechanisms, diffusion and osmosis.

Eco Club Tuesday in the Garden 3:05pm (RCN)

Our first crops of the year are starting to approach harvesting and we have plenty more plants to get ready for the summer. After Easter the garden will be active during registration and lunch times in order to keep it up to scratch. If you are in the lower school and would like help out in these sessions, please contact Mr Craven in SC8.

Year 10 Citizenship Revision Sessions (JAN)

REVISION CLASSES- GCSE CITIZENSHIP UNIT 343

TUESDAYS 3.05pm-4.05PM in HU1 and HU2

Examination dates as follows

Unit 342 11th May 2015

Unit 343 14th May 2015

All Year 10s are invited to attend, please bring with you the revision guides you have been given 3.1, 3.2, 3.3, 3.4.

Science Boosters (KBY)**Biology****Science Lunchtime Boosters**

Biology	Sc4		
Mondays			
09-Mar	B3	Molecules of Life	Proteins and Mutations
16-Mar	B3	Respiration	Cell Division
23-Mar	B3	The Circulatory System	Growth and Development
13-Apr	B3	New Genes for old	Cloning
20-Apr	B4	Ecology and the Local Environment	Photosynthesis
27-Apr	B4	Leaves and Photosynthesis	Diffusion and Osmosis
04-May	B4	BANK HOLIDAY	
11-May	B4	Transport in Plants	Plants need Minerals
18-May	OPEN	Decay	Farming

Science Lunchtime Boosters

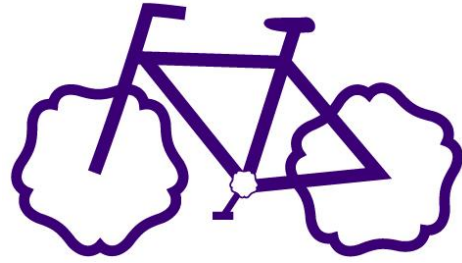
Chemistry	Sc3		
Tuesdays and Thursday Week B			
10-Mar	C3	Rates of Reaction 1	Rates of Reaction 2
12-Mar	C3	Rates of Reaction 3	Reacting masses
24-Mar	C3	% yield and Atom Economy	Energy
26-Mar	C3	Batch or Continuous	Allotropes of Carbon and nanochemistry
21-Apr	C4	Atomic Structure	Ionic Bonding
23-Apr	C4	Periodic Table and Covalent Bonding	Group 1 elements
05-May	C4	Group 7 Elements	Transition Elements
07-May	C4	Metal Structure and Properties	Purifying and testing Water
19-May	OPEN	COME WITH QUESTIONS	
21-May	OPEN	COME WITH QUESTIONS	

Physics**Science Lunchtime Boosters**

Physics	Sc1		
Thursdays			
12-Mar	P3	Speed	Changing Speed
19-Mar	P3	Forces and Motion	Work and Power
26-Mar	P3	Energy on the Move	Crumple Zones
16-Apr	P3	Falling Safely	Energy of games and theme rides
23-Apr	P4	Sparks	Uses of Electrostatics
30-Apr	P4	Safe Electricals	Ultrasound
07-May	P4	What is Radioactivity?	Uses of Radioisotopes
14-May	P4	Treatment	Fission and Fusion
21-May	OPEN	COME WITH QUESTIONS	

Please remember to report absences using the
Dedicated Attendance Line on 01425 282337





'BIKEABILITY' **CYCLE TRAINING**

A Level 1 & 2 combined cycle training course is being hosted by **HIGHCLIFFE SCHOOL**, in conjunction with **Cyclechristchurch** and will be held during the Easter Holiday.

This course is aimed at students from Year Groups 5 to 8 and will consist of 3 sessions over 3 days on **Wednesday 8th April, Thursday 9th and Friday 10th April.**

The cost for the training and assessment will be £20 including badges & certificates.

The training & assessment will take place on public roads in the vicinity of Highcliffe School; therefore places are limited.

Early application is essential!

**Please book directly with: cyclechristchurch@hotmail.co.uk
Or telephone Karen on 07540 428757**

